

PART OF THE W 1/2 OF THE NE 1/4 OF SEC. 22, T.5N., R.2W., S.L.B. & M. 304
 HOWE SUBDIVISION
 AND
 WESTERGARD SUBDIVISION (A SUB. OF LOT 7, HOWE SUB.)

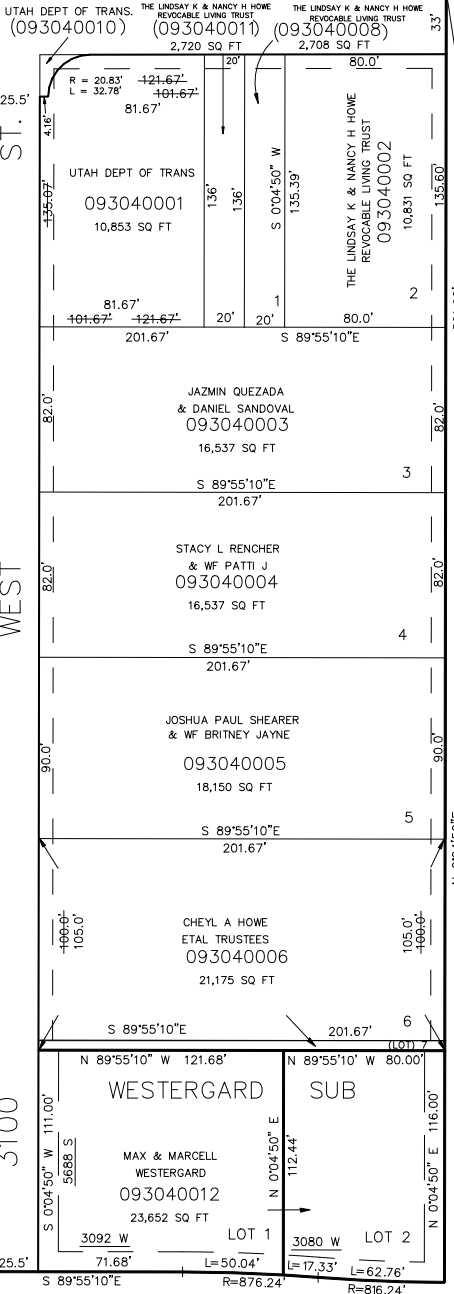
IN ROY CITY SCALE 1" = 50'
 SEE PAGE 85

TAXING UNIT: 41

5600 SOUTH

S 89°55'51"W 227.17' S 89°55'51" W 434.00'

NE COR OF W 1/2 OF
 NW 1/4 OF NE 1/4 OF
 SEC 22 T5N R2W.



SEE PAGE 88

SEE PAGE 85

(HOWE SUB.)
 7' UTILITY EASEMENTS EACH
 SIDE OF PROPERTY LINE AS
 INDICATED BY DASHED LINES.

(WESTERGARD SUB.)
 10' UTILITY EASEMENTS EACH
 SIDE OF PROPERTY LINE AS
 INDICATED BY DASHED LINES.

*EASEMENTS LOT 7 VACATED
 9-3-92 (1637-1)

(HOWE SUB.)
 FOR COMPLETE ENG. DATA SEE
 ORIGINAL DEDICATION PLAT IN
 BOOK 28, PAGE 23 OF RECORDS.

(WESTERGARD SUB.)
 FOR COMPLETE ENG. DATA SEE
 ORIGINAL DEDICATION PLAT IN
 BOOK 34, PAGE 60 OF RECORDS.

SEE PAGE 85

FOR TAX PURPOSES ONLY